

# Annual Report



**2020**

A year of compassion, recognition,  
leadership, and strategic planning



A Clinical Affiliate of **RUTGERS**

Acute & Ambulatory Care

Behavioral Health Care

Emergency Care

Long Term Care

Substance Use Disorder Treatment

# About Us

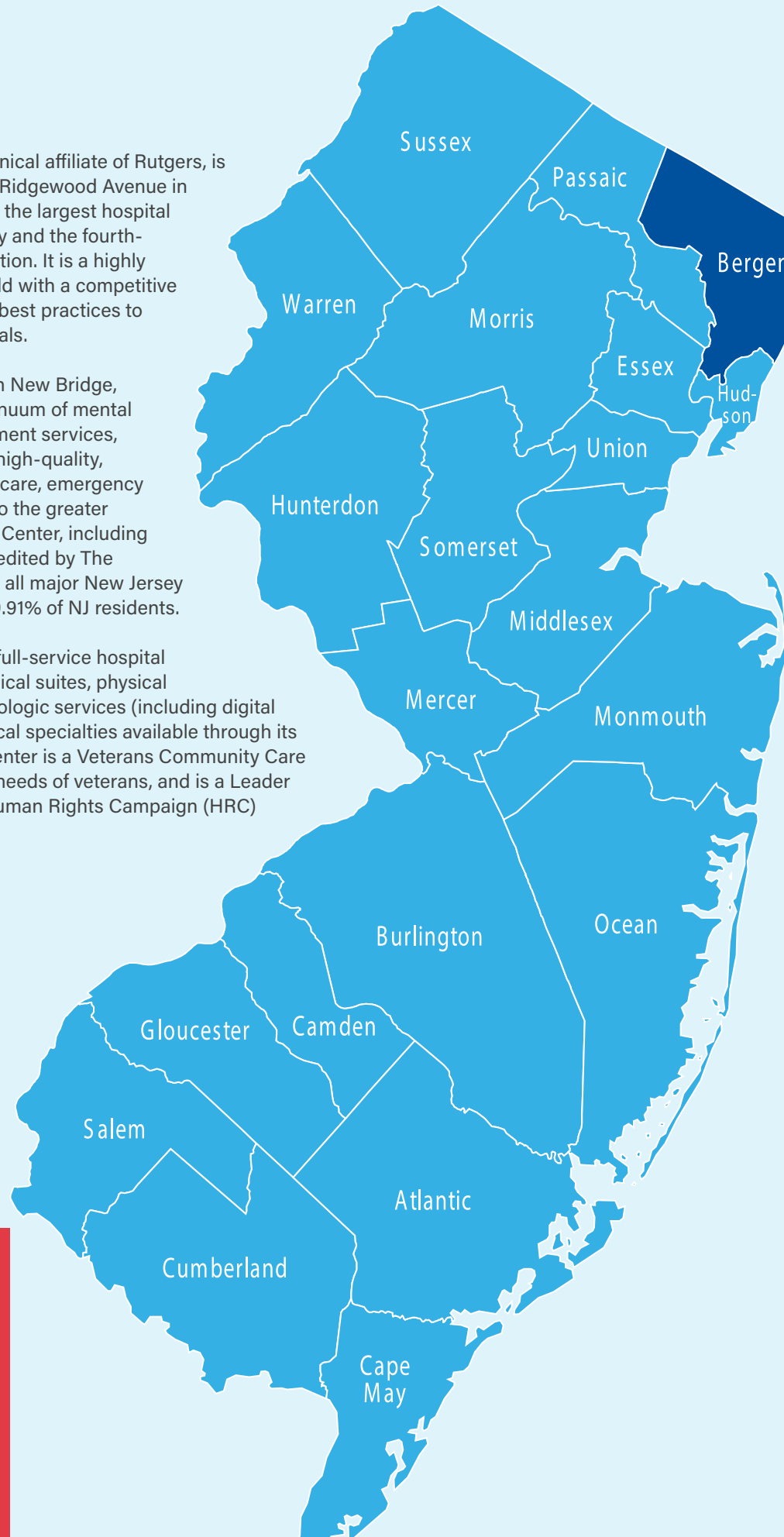
Bergen New Bridge Medical Center, a clinical affiliate of Rutgers, is a 1,070-bed hospital located at 230 East Ridgewood Avenue in Paramus, NJ. The Medical Center is both the largest hospital and licensed nursing home in New Jersey and the fourth-largest publicly-owned hospital in the nation. It is a highly respected leader in the mental health field with a competitive psychiatric internship program teaching best practices to tomorrow's top mental health professionals.

A not-for-profit, safety net facility, Bergen New Bridge, in addition to providing a complete continuum of mental health and substance use disorder treatment services, is also a diverse medical center offering high-quality, comprehensive services including acute care, emergency care, specialty care and long-term care to the greater Bergen County community. The Medical Center, including its Long-Term Care Division, is fully accredited by The Joint Commission and is in-network with all major New Jersey commercial insurance plans, covering 99.91% of NJ residents.

Bergen New Bridge Medical Center is a full-service hospital with a 24/7 emergency department, surgical suites, physical rehabilitation, pharmacy, laboratory, radiologic services (including digital mammography), and more than 26 medical specialties available through its Ambulatory Care Center. The Medical Center is a Veterans Community Care Provider proudly serving the healthcare needs of veterans, and is a Leader in LGBTQ+ Healthcare Equality in the Human Rights Campaign (HRC) Healthcare Equality Index (HEI) for 2020.

Learn more at [NewBridgeHealth.org](http://NewBridgeHealth.org).

**Bergen New Bridge is the largest hospital in New Jersey, and the fourth largest publicly-owned hospital in the nation.**



# A Message from Our President and CEO



**Deborah Visconi**  
President and CEO

“ 2021 and beyond will see the Medical Center continue to broaden services, increase providers, and expand technology. We are proud to be the healthcare partner you — and our entire community — relies on. ”

Hospitals face challenges every year, but 2020 was a year like no other. The COVID-19 pandemic upended and transformed our lives in unimaginable ways. Bergen County was ground zero for the pandemic in New Jersey, and Bergen New Bridge Medical Center's swift and decisive actions were at the forefront of saving lives.

I am immensely proud of our staff for their resilience and unwavering commitment to our patients, long term care residents, the communities we serve, and to one another.

In the face of uncertainty, we stood strong together. We forged strategic partnerships, such as the one with the County of Bergen, leading the way with COVID-19 testing by establishing drive-up testing and a mobile program that brought testing into our communities most affected by the outbreak.

We never lost sight of the need to educate and reassure those who put their health care on hold due to COVID-19. Throughout the ebbs and flows of the pandemic, we encouraged our communities to stay the course with health care through an initiative we dubbed the COVID-19 Trifecta – seek the care you need, manage chronic conditions, and get tested often.

In the face of the unknown, the thing we did well and often was to pivot. We quickly realized the overwhelming demand for caring for COVID-19 patients. The Medical Center partnered with the US Army Corps of Engineers to add 130 beds in two groundbreaking alternate care facilities, allowing us to continue caring for non-COVID-19 patients while caring for the rapidly increasing number of COVID-19 patients.

Addressing social determinants of health and caring for traditionally underserved communities remained at the forefront of our daily actions throughout the COVID-19 fight. We launched several new community health strategies and opened our first satellite location in 2020. Furthering our commitment to diversity, equity, and inclusion, we expanded our support to the LGBTQ+ community by opening the County's first LGBTQ+ Wellness Center. Also, in 2020, the US Department of Veterans Affairs recognized Bergen New Bridge as a Veterans Community Care Provider, enabling us to provide high-quality care in our community for veterans who would otherwise have to travel far from their homes.

When the vaccine became available, we transformed our Alternate Care Facility into a vaccination center and initiated an aggressive vaccination program to protect our team and our community, particularly those underserved and disproportionately affected by the virus.

As you read this report and travel with us through our COVID-19 journey, I hope you feel the same sense of gratitude I do for the amazing healthcare heroes of Bergen New Bridge. They rose through the darkest moments of the unknown and were leaders in our state's emergence from this pandemic.

Throughout 2021 and beyond, you will see Bergen New Bridge continue to broaden services, increase providers, enhance access, and expand technology. We are proud to be the healthcare partner you — and our entire community — relies upon.

Thank you for your continued support. We are Bergen New Bridge Strong—Together!

# Message from Our Board Chair



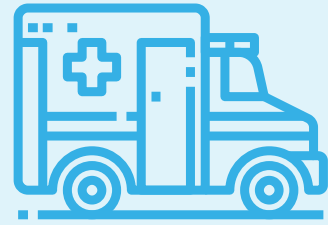
**Robert Pacicco**  
Chairperson

As the Chair of Care Plus Bergen Inc., the not-for-profit operator of Bergen New Bridge Medical Center, I am proud to share this annual report with our communities. It provides a snapshot of perhaps the most unprecedented year modern health care has ever seen. None of us could have foreseen weathering the storm of a global pandemic, but that is what our Medical Center did. Over these following few pages, we will share how we did it and continued to change course to emerge more robust than ever and more capable of providing essential care for all those we serve.

In 2017, Care Plus Bergen Inc., an innovative alliance between three world-class partners – Rutgers New Jersey Medical School, Integrity House, and Care Plus NJ, Inc. – was formed to manage the day-to-day operations of Bergen New Bridge Medical Center; strengthen the hospital's core services of behavioral health, substance use disorder treatment, long-term care, acute care, and ensure greater access to primary care for all Bergen County residents. We could not have predicted the essential role Bergen New Bridge would play in fighting a pandemic through providing equitable access to care for vulnerable communities, leading the way with COVID-19 testing, and now, being a significant force in vaccination efforts. Bergen New Bridge, under the leadership of President and CEO Deborah Visconi, has exceeded our expectations.

On behalf of the Care Plus Bergen, Inc. Board of Trustees, we thank the staff of Bergen New Bridge for their unwavering commitment to all those in their care during this pandemic. We also applaud the hospital's leadership, and we are very appreciative of the continued support of our communities.

Stay safe and be well.



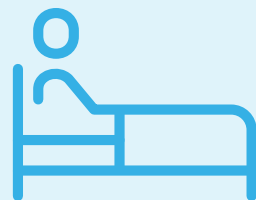
**99.91%**  
of NJ Residents' Insurance Accepted

In network with all major New Jersey commercial insurance plans covering 99.91% of NJ residents.



**11,265** Emergency Room Visits  
Less than **20 minutes**

On average, an emergency room patient is seen by a physician in less than 20 minutes.



**1,070** Total Beds  
**84** Detox Beds  
**89** Acute Care Beds  
**323** Behavioral Health Beds  
**574** Long Term Care Beds

## OUR MEDICAL CENTER AT A GLANCE

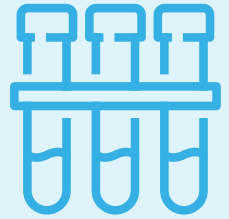
The number and breadth of treatments and services, and the number of professionals offering them at Bergen New Bridge continues to expand. Here's where we stood in 2020.



**4,500** Unique Drugs & Medicines

**76,000** Scripts Filled  
Long Term Care Pharmacy

**76,500** Scripts Filled  
Outpatient Pharmacy



**588**  
Types of Lab Tests Available



**342**  
Radiology Services Available



**32** Psychiatry Residents

Our psychiatry residency program is one of the largest and most well-respected in the area. Our patients benefit from the intense clinical experience residents receive in adult, geriatric, addiction, and child psychiatry. The intensive theoretical and clinical training establishes a foundation for future specialization.



**212** Physicians  
**26** Medical Specialties  
**161** Unique Medical Procedures Performed



**Yuna Maeda**  
Infection Control Practitioner



### HERO SPOTLIGHT

ROI-NJ selected Yuna as one of New Jersey's Unsung Healthcare Heroes. Yuna tracked, updated, and reported our COVID-19 census throughout the pandemic, providing accurate and essential data.

# Looking Back



Main Lobby Renovation, October 2019



Governor Murphy Shows Support at the Horizon Agreement Announcement

## October 1, 2017

The County of Bergen unveiled the new name of its hospital, Bergen New Bridge Medical Center, a clinical affiliate of Rutgers Biomedical and Health Sciences. The County welcomed Care Plus Bergen Inc. as the new not-for-profit operator of Bergen New Bridge Medical Center. Care Plus Bergen Inc. is an innovative alliance between three world-class partners – Rutgers New Jersey Medical School, Integrity House, and Care Plus NJ Inc. – and manages the day-to-day operations of the Medical Center.



Name Unveiling

## July 2018

Bergen New Bridge Medical Center became the first New Jersey hospital to sign onto the New Jersey Health Information Network (NJHIN). NJHIN, a shared services platform created by the New Jersey Department of Health (NJDOH) and powered by the New Jersey Innovation Institute (NJII). The platform allows for the electronic exchange of patient health information among healthcare providers and state health data sources.

The Medical Center executed a significant medical record and technology upgrade. After months of planning, Bergen New Bridge smoothly implemented new and upgraded tools to empower our physicians and staff to provide high-quality care for our patients and residents while improving our ability to develop our strategies.



## July 2019

Bergen New Bridge Medical Center announces an innovative alliance with the state's largest insurer, Horizon BCBSNJ, and increased access to quality care.

### New Service Lines Added

- Bariatric Surgery
- Hepatology
- Head & Neck Surgery
- Sports Medicine
- Vascular Medicine
- Expanded Musculoskeletal Services
- Pre-Admission Testing Department

### Equipment Modernizations/Additions

- Endoscopic Video System
- Phaco Machine
- Chemistry Analyzer
- Stryker Laparoscopic Tower
- EMG Machine
- Medication Carts
- Abbott Architect Analyzer
- Hitachi CT Scan
- Portable ER Radiology Unit
- Ambulances and 9-1-1 Response Team



Branded Ambulance Fleet in partnership with NJ Mobile Healthcare



Phaco Machine

# An Unprecedented Year



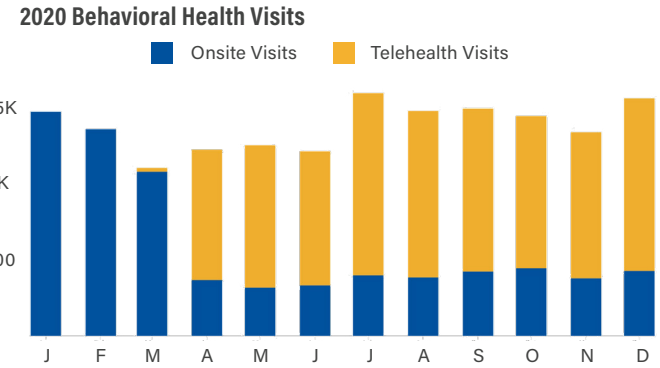
Our First Drive-Through COVID-19 Testing Program

When COVID-19 surfaced in New Jersey, Bergen County was the pandemic's epicenter. Bergen New Bridge Medical Center swiftly applied policies and practices exceeding the CDC and State Department of Health guidelines, including restricted visitation, responsible PPE management, and mandatory masking for all employees.



Bergen New Bridge expanded its telemedicine program to include behavioral health and substance use disorder patients to protect staff, patients, and the communities served. It adapted the program for rapid in-house COVID-19 testing. More than 35 telehealth professionals scheduled tests and helped patients understand and act on the results. This tactic was vital for asymptomatic patients after exposure to the virus.

By pivoting our mental health service line to a virtual platform, the Medical Center provided vital care for those struggling with the mental and emotional effects of the pandemic. Across the country, the stress of the pandemic ravaged individuals already battling opioid addiction and abuse. The "epidemic within the pandemic" dramatically increased relapse rates, alcohol use, and drug overdoses. Calls to addiction helplines and demands for group recovery meetings skyrocketed. While the pandemic forced substance use treatment services elsewhere to shut down, Bergen New Bridge's telemedicine platform allowed them to continue services in this challenging year.



**HERO SPOTLIGHT**

**Dr. Scro** was always available, day and night, to test and care for COVID patients, ensuring our Emergency Department continued to provide excellent care and education to our communities. He also provided reliable information to the media.

**Matthew Scro, MD**  
Emergency Room Physician

**Capacity**

As the pandemic surged, the need for more intensive care capacity in New Jersey threatened to overwhelm hospitals with COVID-19 patients. Under President and CEO Deborah Visconi, the Medical Center partnered with the US Army Corps of Engineers to provide 130 additional beds in two innovative alternate care treatment centers. Thus, Bergen New Bridge could continue caring for non-COVID-19 patients while ensuring ICU space for those admitted with COVID-19.

# Response, Resilience, & Health Care Reimagined

## Long-Term Care

Bergen New Bridge operates an onsite, 574-bed, long term care facility. Recognizing the senior population's increased vulnerability to COVID-19, the Medical Center prioritized infectious disease control procedures, including mandatory masking and testing. We quickly instituted and closely followed the rapidly evolving guidelines through the first wave to limit spreading COVID-19 among residents and staff.

Social and family connections are crucial to the mental and physical health of residents, so we gave our long term care staff the necessary resources for our residents:

- Remote visitation
- Window visits
- Outdoor visitation
- In-person compassionate care
- Essential caregiver program

Our efforts saw fewer COVID-19 cases and deaths among residents and caregivers than reported elsewhere.



**HERO SPOTLIGHT**

Jimmy showed tremendous respect and compassion while transporting those who passed from COVID-19. He set an example by rising to a challenge during the most difficult of times and was our first staff member to step forward to be vaccinated.

**Jimmy Nettles**  
Transporter



## Testing and the Promise of a Vaccine

Bergen New Bridge quickly became a leader in COVID-19 testing, a critical part of the plan to safely re-open the state. Ours was the first hospital in New Jersey to mandate universal onsite COVID-19 testing of staff at no cost to them.

The Medical Center was the first to open drive-through testing and use the Rutgers saliva test. We were one of the first in New Jersey to offer COVID-19 antibody tests as another weapon in our arsenal against the virus. In late May 2020, we launched and staffed a mobile testing program in partnership with Bergen County – bringing COVID-19 testing to local communities, particularly those underserved and heavily affected by the outbreak.

In late 2020, with a safe and effective COVID-19 vaccine on the horizon, Bergen New Bridge converted the Alternate Care Annex into a vaccination site. On December 18, 2020, Bergen New Bridge delivered its first vaccinations to hospital staff. As a sign of solidarity and an example of trust in its efficacy and safety, CEO Deb Visconi was one of the first hospital executives in the state to be vaccinated. The Medical Center quickly initiated multiple, simultaneous vaccination programs while continuing its robust COVID-19 testing program.

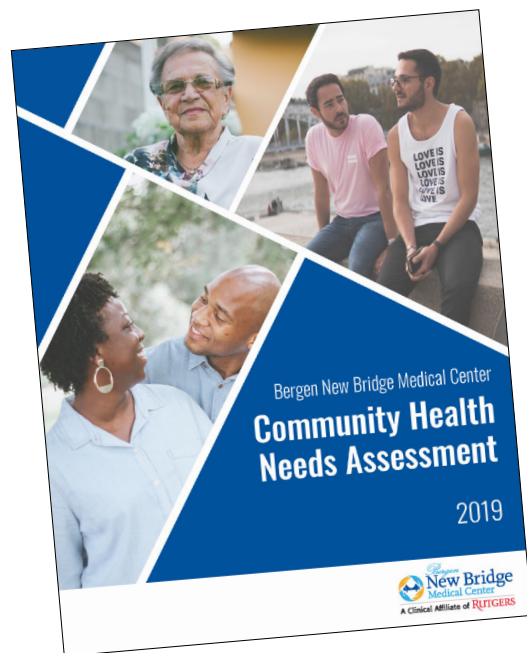
Bergen New Bridge remained true to its mission to provide our underserved communities the care and services they so desperately need. We formed the COVID-19 Vaccine Equity Team with our partners — The County of Bergen, The Bergen Coalition of Black Clergy, and Greater Bergen Community Action —to provide education about and access to the COVID-19 vaccines. We were instrumental in improving the vaccination numbers for our at-risk black and brown, Asian, Muslim, Latinx, LGTBQ+, and seniors communities.

# Community Involvement

## 2019 Community Health Needs Assessment

In February 2020, Bergen New Bridge Medical Center shared the results of its first Community Health Needs Assessment (CHNA), a snapshot of our communities' greatest health needs, created from 18 months of research, focus groups, surveys, and assessments, and a plan for how to meet them best.

The CHNA report serves as the roadmap for program development, additional satellite locations such as Bergenfield and Paterson, expanded services, and a robust community health program bringing focus to population health, chronic condition management, and mental health and wellness into communities most in need.



**Bergen New Bridge Partnership with Fusion Muslim Community Center of North Jersey**

## Serving Our Diverse Communities: Korean, Muslim, LGBTQ+

Bergen New Bridge continually seeks opportunities to meet our diverse communities' needs.

After establishing the region's first long term care program dedicated to Korean Americans more than 15 years ago, our Medical Center continues to prioritize the community's needs. Approximately 140 Korean Americans are residents, prompting our selection to host a South Korean delegation learning about best practices in American nursing homes.

In October 2020, in recognition of our leadership in this area, the main campus was selected as America's first "Greetingman" site. Donated by philanthropist HK Choi, the statue symbolizes peace, reconciliation, respect, homage, diversity, equity, and inclusion. Care Plus Bergen Board of Trustees Chairman Robert Pacicco was instrumental in facilitating the donation.

New Jersey has the highest percentage of Muslim residents nationwide, and Bergen County has the second-largest Muslim community in the state. In July 2020, Bergen New Bridge announced a partnership with Fusion Muslim Community Center of North Jersey, creating a unique partnership as their provider of choice.



**The Greetingman statue was donated by philanthropist HK Choi**



**LGBTQ+ Wellness Center Ribbon Cutting**

LGBTQ+ community members often delay or avoid life-saving preventative care because they feel stigmatized or misunderstood in physicians' offices. Our doctors train and collaborate with subject matter experts to meet this community's unique and diverse needs. The Human Rights Commission first recognized the Medical Center as a "Leader in LGBTQ+ Healthcare Equality" in 2019. In June 2020, we opened the region's first LGBTQ+ Healthcare Center, which is supported and enhanced by organizations such as New Jersey Buddies, Garden State Equality, and the Gay-Straight Alliance in area schools.



## A New Bridge to Health

When the threat of COVID-19 transmission among New Jersey's incarcerated led to their widespread release, many released individuals only had a two-week supply of substance use disorder and other prescription medications. Bergen New Bridge President and CEO Deb Visconi recognized that a positive community reintegration required an immediate link to healthcare providers. The Medical Center partnered with the NJ Reentry Corporation to provide direct access to Medication-Assisted Treatment for ongoing substance use disorder care. The clinical staff conducted health screenings, identified appropriate medical providers, and scheduled appointments to maintain an individual's health. This innovative program, called "A New Bridge to Health," connects those individuals to primary care providers, medication management, and treatment of chronic conditions via a telemedicine system.

Bergen New Bridge is dedicated to its mission to expand services and programs fostering equity, diversity, and inclusion while providing access to quality health care for all.

## Serving Those Who Served Us: Veterans

The US Department of Veterans Affairs designated the Medical Center a Veterans Choice facility in 2018. In February 2020, the Medical Center joined the Veterans Affairs Community Care Network. This federal program helps County area veterans access health care close to home rather than face long waits for appointments and inconvenient travel.

Services include imaging, outpatient care, diagnostics, laboratory, pharmacy, behavioral health, substance abuse, medical detox, and rehabilitation.



# Clinical Expansion

Bergen New Bridge's commitment to the community's health is most evident in our ongoing effort to expand and enhance our facilities, staff, and services.

The arrival of COVID-19 created an urgency to institute medical services to battle the pandemic. But Bergen New Bridge leadership determined the pandemic would not supplant or compromise the critical goals they established for 2020 before the pandemic's outbreak. As a result, the Medical Center made significant strides in advancing cardiac imaging services, diagnostics, laboratory capabilities, and outpatient care. Furthermore, they met a self-imposed challenge to double within four years the number of unique surgical procedures the hospital offers, which now totals more than 160.

### New Satellite Locations

This past year saw a dramatic expansion of our ability to provide outpatient care to under-served communities. In 2020, we opened a Paterson outpatient clinic at the former Barnert hospital complex in Paterson, which was completely renovated and refurbished as a cutting-edge medical facility annex. This satellite clinic is home to doctors providing cardiology, surgery, nephrology, endocrinology, rheumatology, and gastroenterology care in the greater Paterson area. Building on the success of Bergen New Bridge at Barnert, we partnered with the community leaders in Bergenfield to open Bergen New Bridge at Bergenfield. The Bergenfield clinic provides easy, nearby access to primary and specialized healthcare services to residents in the area.

### New Service Lines, Hires, and Partnerships

The Medical Center's ongoing efforts to partner with highly regarded medical groups paid off handsomely this year. They partnered with the University Radiology Group under Dr. Alan Heideman's leadership and the New Jersey Urology Group under Dr. Jason Wynberg's leadership. These new partnerships follow Active Orthopedics, a new orthopedic group led by Dr. Michael Gross, joined the hospital at the end of 2019.



Bergen New Bridge Health at Barnert



Stereotactic Breast Biopsy System



Cardiac Imaging Services

### Diagnostic Radiology Services

- X-Ray
- Fluoroscopy
- CT/CTA
- CT Calcium Scoring
- MRI
- Ultrasound
- Ultrasound-Guided Biopsies
- Echocardiography
- Stress Echocardiography
- Transesophageal echocardiogram (TEE)
- Mammography
- Diagnostic Mammo/Breast Ultrasound
- Stereotactic Biopsy
- General Nuclear Medicine
- Nuclear Stress Test
- Interventional Radiology

## HERO SPOTLIGHT

**Elvira Toska**  
Medical Technologist

Bergen County's (201) Magazine featured Elvira in 'Honoring Courage Through COVID-19.' Recognized for her unwavering dedication and her tireless work processing critical test results throughout the height of the pandemic.



**Dr. Michael Gross** brings almost thirty years of specializing in orthopedics and sports medicine to patients at the Medical Center. He is board certified by the American Board of Orthopaedic Surgery in orthopedic surgery and orthopedic sports medicine.



**Dr. Alan Heideman** is board certified by the American Board of Radiology – Diagnostic Radiology. He leads our radiologists in providing timely diagnostics and aiding our physicians throughout the Medical Center in providing quality care for our patients and residents.



**Dr. Jason Wynberg** is board certified by the American Board of Urology and a Fellow of the American College of Surgeons. A member of the American Urological Association and the Endourological Society, Dr. Wynberg has been practicing urology and men's health for 18 years.



# Philanthropy

## Bergen New Bridge Medical Center

Members of the Franklin Lakes Education Association deliver their donations

A year ago, the world changed as COVID-19 quickly became a pandemic. Bergen County was at the epicenter of the pandemic in New Jersey, and the Medical Center acted promptly and effectively to protect our communities.

The Bergen New Bridge Foundation, the nonprofit 501 (c)(3) fundraising arm of the Medical Center, announced its new Executive Director, RoseMary Klie, as the pandemic broke in New Jersey. She and the Foundation trustees jumped into action, pivoting from traditional golf outings and fundraisers to campaigns to sustain the Medical Center and its staff during this unprecedented time.

**With community support, the Foundation raised funds and secured grants that supported:**

- Community COVID-19 testing, including potential new approaches such as drive-through clinics
- Additional resources in the Emergency Department and intensive care unit, including ventilators, beds, telehealth capabilities, and sanitization resources
- Personal protective equipment (PPE) procurement
- Community education efforts
- Social connection via technology for our long term care residents separated from their loved ones and visitors
- Meals and personal care items for staff

## The power of generosity and giving back is truly one of the lessons learned from COVID-19.

Bergen New Bridge and its Foundation will always be here for our communities, and the continued generous support of our neighbors will help them to:

- Increase the capacity and services of the Emergency Department, the community's portal to emergent medical and mental health care
- Enhance access to health care for underserved populations, including those suffering from mental health issues and substance use disorder
- Strengthen and increase our pediatric and geriatric specialty programs
- Enhance medical, surgical, and critical care inpatient units
- Modernize our facility so we can continue to provide access to life-saving care and specialized services when friends, family, and neighbors need it.



Hospitals are struggling to survive as a direct result of the pandemic. Community support is needed more than ever to help ensure the continuation of the essential work the Medical Center performs for those who need it the most.

Please visit [NewBridgeHealth.org/foundation](https://NewBridgeHealth.org/foundation) or contact RoseMary Klie, Executive Director of the Bergen New Bridge Medical Center Foundation, 201.225.7674 or [rklie@newbridgehealth.org](mailto:rklie@newbridgehealth.org) to find out how you can support the County's healthcare asset.

### Help Us Reach Our Goal of \$5,000,000

To learn how you can support our hospital so we may best care for you and your neighbors, contact:

RoseMary Klie  
Executive Director

Bergen New Bridge  
Medical Center Foundation

201.225.7674  
[rklie@newbridgehealth.org](mailto:rklie@newbridgehealth.org)

or visit

[NewBridgeHealth.org/foundation](https://NewBridgeHealth.org/foundation)



#BergenNewBridgeStrong

“ We all have something we can give; something we can do to help make a difference every day. There is true power in giving and we may not realize it, but we are all philanthropists in our own way. ”



**RoseMary Klie**  
Executive Director  
Bergen New Bridge Medical Center  
Foundation



# Looking Ahead



### Emergency Department

Like most hospitals throughout New Jersey, Bergen New Bridge Medical Center saw its Emergency Department stressed beyond its limits in 2020. The reason is two-fold:

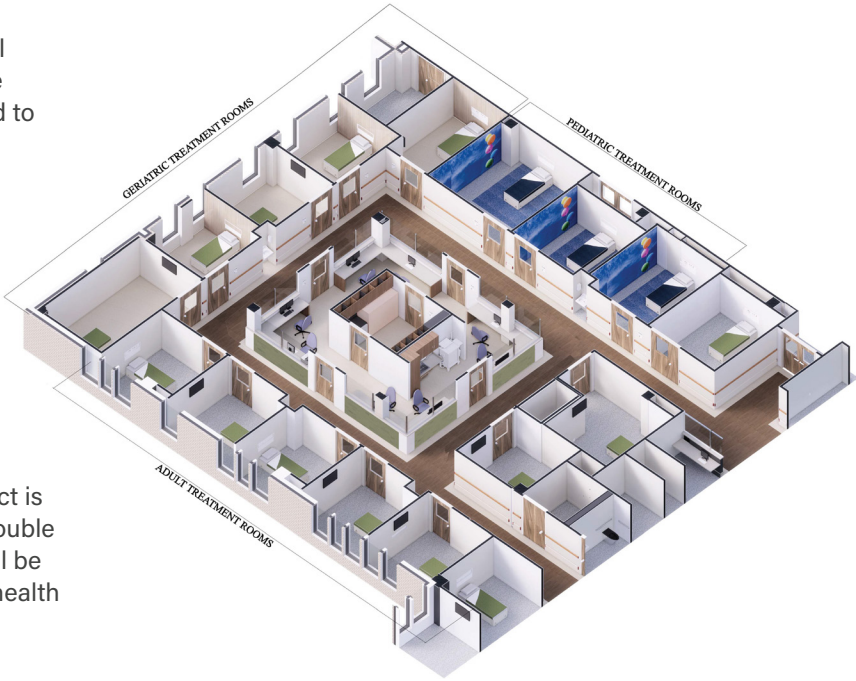
First, the sudden onset of the COVID-19 crisis highlighted the need for increased capacity in hospitals' emergency departments. Not only did they need to accommodate more patients, but they also needed to separate the patients to ensure their safety and privacy physically.

Second, the pandemic led to a sharp increase in mental health, substance use disorders, and attempted suicide and overdoses. We do not expect this unfortunate trend to subside any time soon.

Bergen New Bridge leadership formulated plans to enhance and expand our existing 19-bed Emergency Department to address our communities' current and emerging needs. Because the number of Emergency Department patients admitted into the hospital has also increased, the plans include expansion and upgrades to our acute, intensive care, and critical care units.

The planned Emergency Department Renovation Project is scheduled for completion in 2023 and will more than double the current bed capacity. Of 49 beds, nineteen beds will be reserved for acute care patients and 30 for behavioral health and substance use disorder patients.

Once complete, the renovated Emergency Department will allow the skilled medical staff to better address the diverse communities' medical and mental health needs in a state-of-the-art living room-concept treatment space. This project is essential to fulfilling their mission and commitment to health for all and making it easier to provide equitable access to health care for Bergen County's most vulnerable and underserved populations.



Building a bright new future

### Radiology Advancements

The department is moving MRI services from a trailer to a new second-floor site for the new Hitachi Echelon Oval 1.5T. With better environmental controls and consolidation with the rest of radiology, this will offer greater comfort to patients and technicians and enhance the patient experience.



Hitachi Echelon Oval 1.5T

### Emergency & Acute Care Expansion

The renovation is scheduled for completion in 2023.

With 49 beds, the Emergency Dept. capacity will more than double.

The Medical Center's acute, intensive care, and critical care units will offer 60 modern private patient rooms.

### Enhancing the Patient Experience

The Emergency Department expansion is a significant undertaking in both improving care and increasing the number of patients being admitted for inpatient care. The Medical Center's acute, intensive care, and critical care units, will be transformed into 60 state-of-the-art private patient rooms. The upgrade will provide better patient privacy, enhance the environment, and increase our staff's ability to deliver quality care.



**HERO SPOTLIGHT**

From day one of COVID-19, Gina Marie was on the frontline, providing leadership while performing essential procedures and testing COVID-19 patients without hesitation, regardless of the circumstances.

**Gina Marie Russo, RN**  
Emergency Department Director



# Recovery Center

For much of 2020 in New Jersey, overdose deaths were on an upward trend, with nearly 1,600 residents losing their lives to overdose during the first six months of the year. One thing was abundantly clear — the COVID-19 pandemic took a severe toll on individuals' mental health, putting those who may have recovered from alcohol or drug addiction at increased risk of relapse. As a recovery and treatment hub in Northern New Jersey, Bergen New Bridge responded to this vital community need by establishing the Peer Recovery Center, which links substance use patients and their families with services they need throughout their recovery.

The Recovery Center provides a unique opportunity for members to meet and connect with others who have similar life experiences and offers a wide variety of activities and events to promote physical and mental well-being:

- Bowling night
- Board game night
- Movie premiere and discussion
- Book club
- Painting classes
- Hiking outings
- Photography walks

The Center also hosts family nights to educate families and significant others about their essential supportive role in recovery.

The Center offers a warm, welcoming, and safe environment that safeguards equity, inclusion, dignity, and respect for all. By promoting physical, mental, emotional, and spiritual wellness, the Center's "drop-in" approach helps members take control of their recovery and overall health. Allowing members to plan and participate in activities they see as helpful enables the Center to empower and support each participant's path towards healing.



**Srikanth Reddy, MD**  
Chief of Addiction Psychiatry



## HERO SPOTLIGHT

Dr. Reddy maintained outpatient care services during the COVID-19 pandemic to ensure the patients dependent on medicine-assisted treatment had uninterrupted access to the medication and counseling they needed for their recovery.

**Realization of this project is made possible by a generous grant from the Russell Berrie Foundation**

# In the Media



## Clap out at the Bergen New Bridge Medical Center

April 14, 2020 – Paramus First Responders hold an appreciation "clap out" at the Bergen New Bridge Medical Center in Paramus, NJ. Their intention is for our healthcare partners to know how much they are appreciated for their efforts in battling this COVID-19 pandemic.



## Bergen New Bridge Medical Center Implements Employee COVID-19 Surveillance Testing - Will test its 2200 employees to help mitigate asymptomatic virus spread

November 16, 2020 – As New Jersey and, particularly, Bergen County see a significant increase in positive COVID-19 cases, Bergen New Bridge President and CEO Deborah Visconi announced today that the Medical Center will test all of its 2,200 employees in a facility-wide COVID-19 surveillance testing program.

"We have led the way with community COVID-19 testing from the beginning of the pandemic," said Visconi. "With significant community spread, implementing this employee surveillance testing program was another way for us to protect our staff and all those in our care. She added, "We have already been testing staff in our long term care division, and now is the right time to expand our testing to all employees throughout our facility."



## Bergen New Bridge opens LGBTQ+ Health and Wellness Center

October 23, 2020 – "This center is a safe place where LGBTQ+ individuals can access care, testing, and education in a welcoming, supportive, equitable, and stigma-free environment," Visconi said. "Our goal is to connect members of that community with medical and mental health services in one convenient location."



## Bergen New Bridge Medical Center, NJ Reentry Corporation Launch 'New Bridge to Health' for Those Leaving State Prisons

Nov. 20, 2020 – "We are proud to work collaboratively with James McGreevey and the NJ Reentry Corporation to offer a complete continuum of care for those coming back to our communities," said Deborah Visconi, President and CEO of Bergen New Bridge Medical Center.

"Having an immediate connection to health care to maintain their medications and other conditions is crucial for successful reintegration after incarceration," said Visconi. "This partnership aligns with our mission and dedication to caring for underserved populations, managing population health, and addressing social determinants of health to better care for our communities."

## Bergen New Bridge, CarePlus Suicide Response Program Gets Funding

July 28, 2020 – Care Plus NJ and Bergen New Bridge Medical Center have received a federal grant to fund the Bergen County Suicide Prevention and Response Program.

In a Monday news release, the two collaborators announced the Substance Abuse and Mental Health Service Administration awarded \$800,000 in federal grant money.

The grant, they said, will advance their efforts to prevent suicide, and suicide attempts, amid the coronavirus pandemic in Bergen County.



## Mission Our reason for being

We enhance community health and well-being by providing high-quality, compassionate care that is accessible to those in need.

## Vision Our place in the world

By our actions, we will demonstrate national leadership as a premier academic community medical center for clinical care, education, and scholarship.

## Core Values Our ideals

### Compassion

We understand that we are in a business to care for others at a time when they need it most and commit to approaching all interactions with humanity and kindness.

### Respect and Inclusivity

We are dedicated to creating a welcoming environment that safeguards equity, inclusion, dignity, and respect for all.

### Quality

We aim to provide high-quality care that is safe, timely, efficient, and focused on creating the ideal patient-centered experience.

### Safety

We demonstrate an intentional commitment to a culture of safety in our decisions and behaviors.

### Excellence

We strive to be at our best and work continuously to improve performance and exceed expectations.



A Clinical Affiliate of **RUTGERS**

230 East Ridgewood Avenue  
Paramus, New Jersey 07458

[NewBridgeHealth.org](http://NewBridgeHealth.org)

Acute & Ambulatory Care

201.225.7130

Access Center for Mental Health  
and Substance Abuse Services

201.730.2762

Emergency Care

201.967.5079

Long Term Care Admissions

201.967.4073